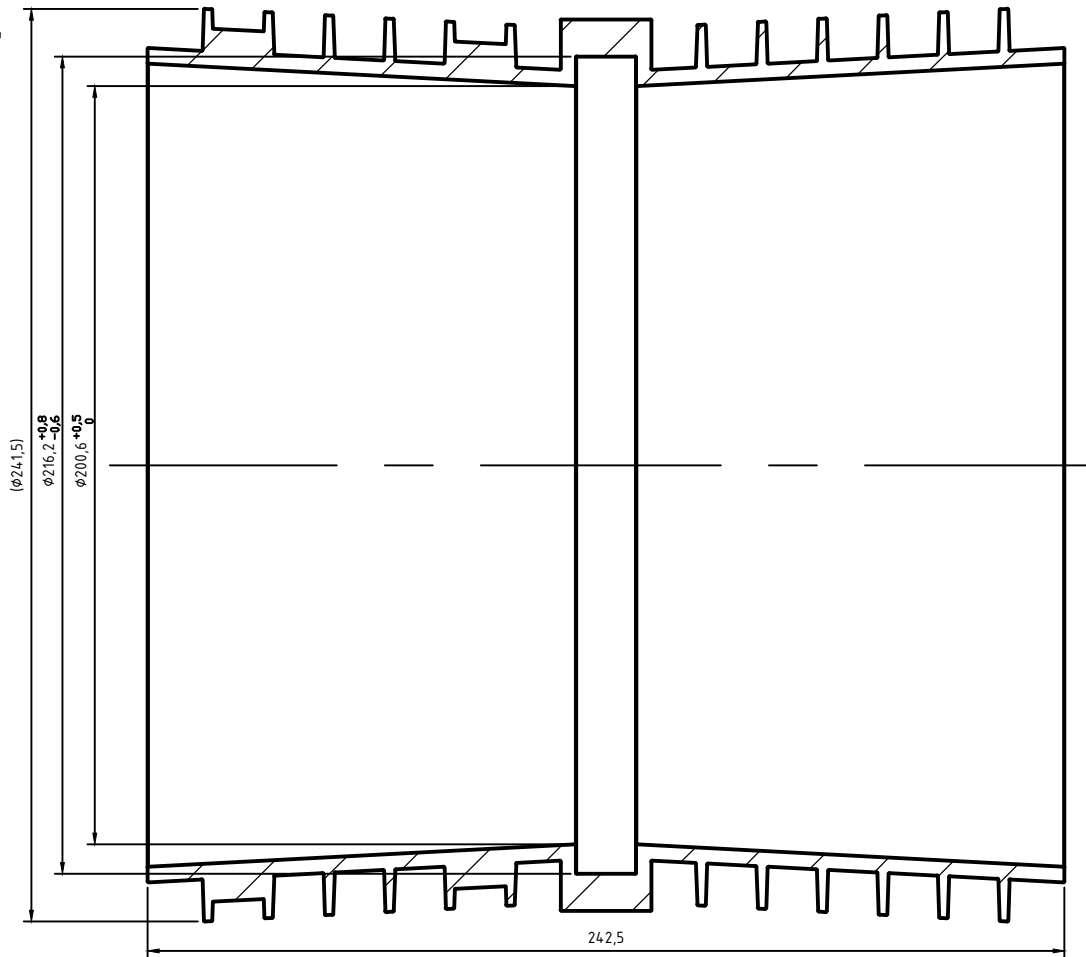
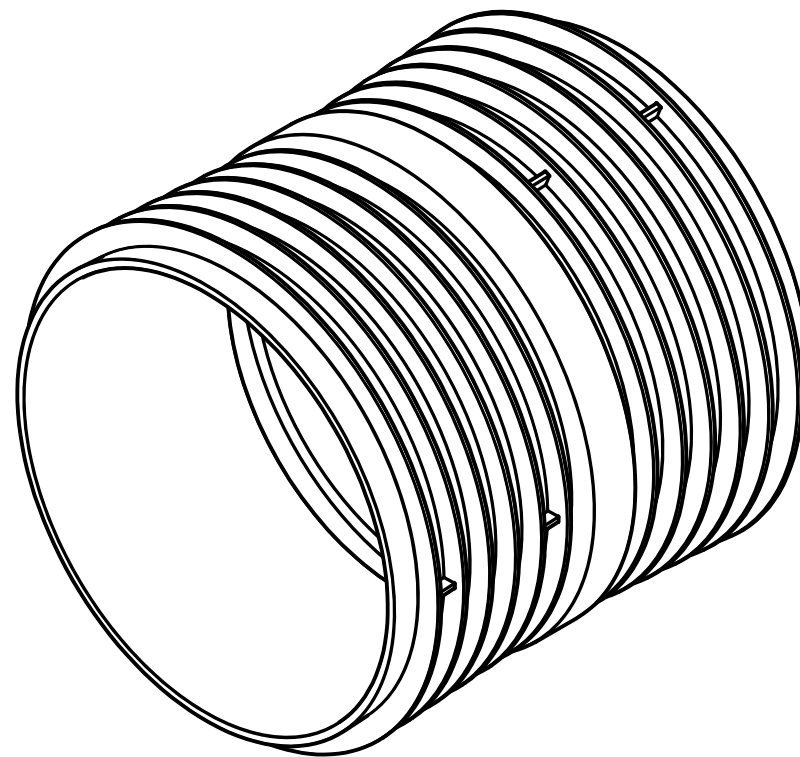
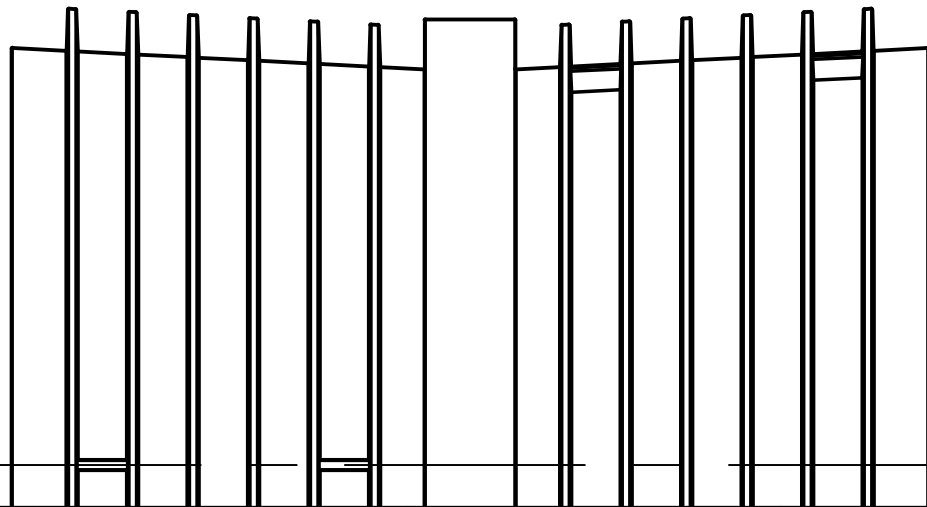


Schnitt A-A



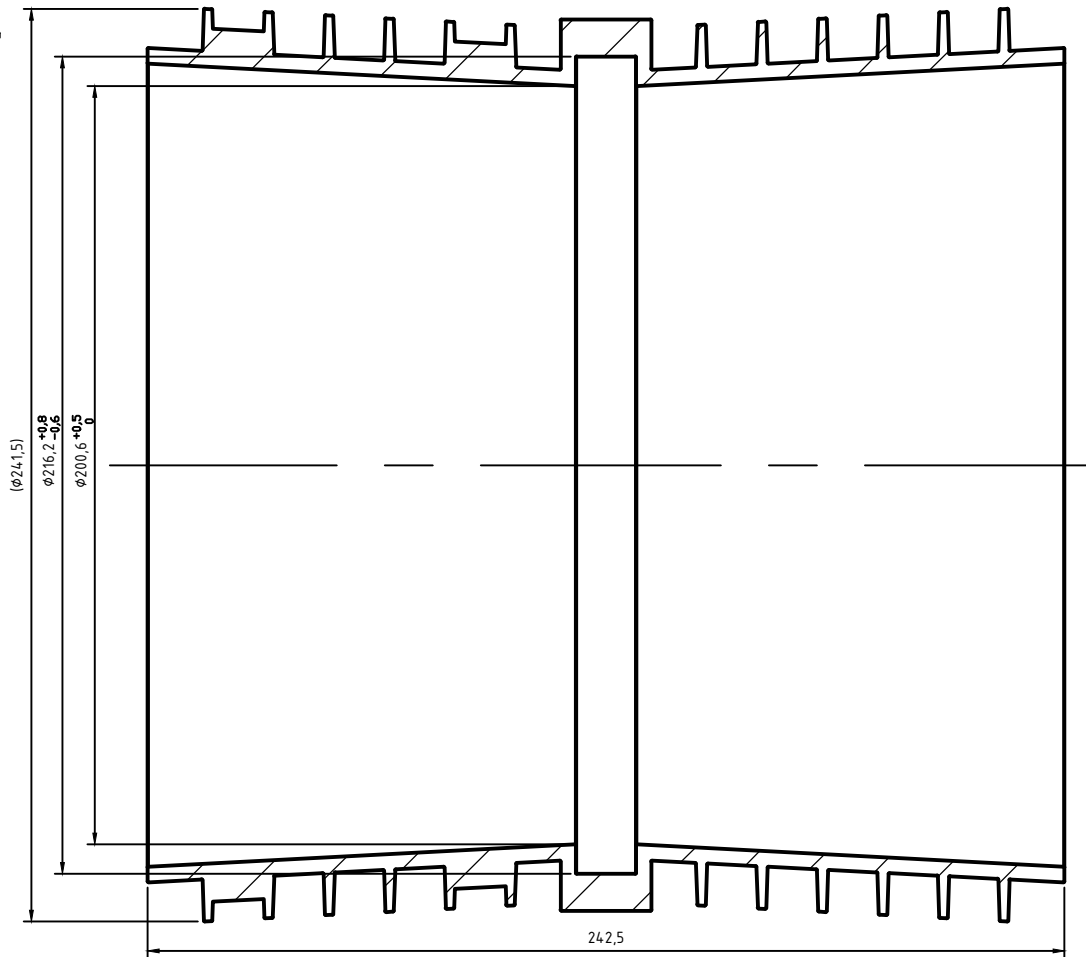
$\varnothing 24,15$
 $\varnothing 216,2^{+0,8}_{-0,6}$
 $\varnothing 200,6^{+0,5}_0$

242,5



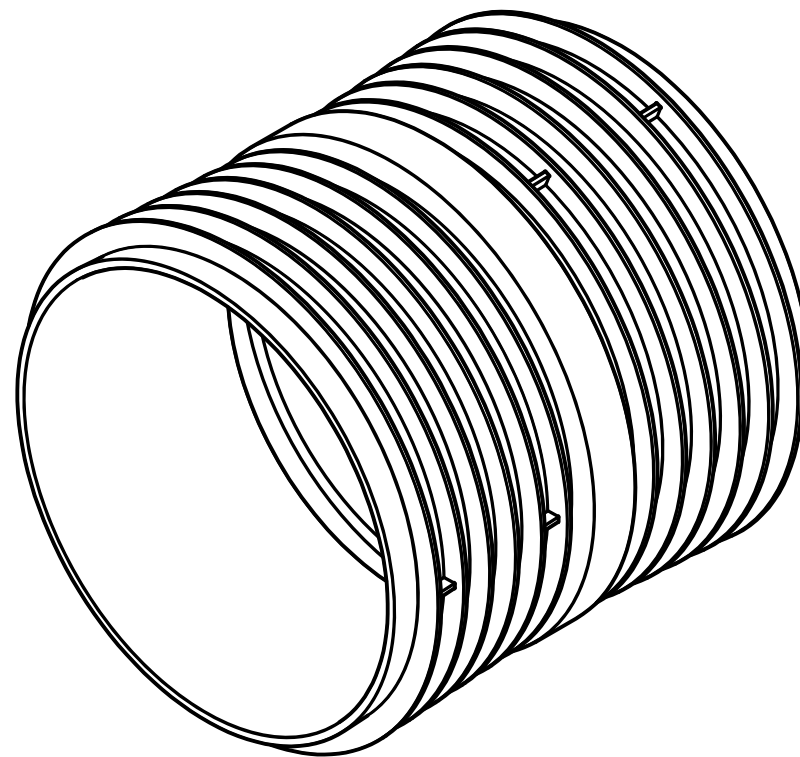
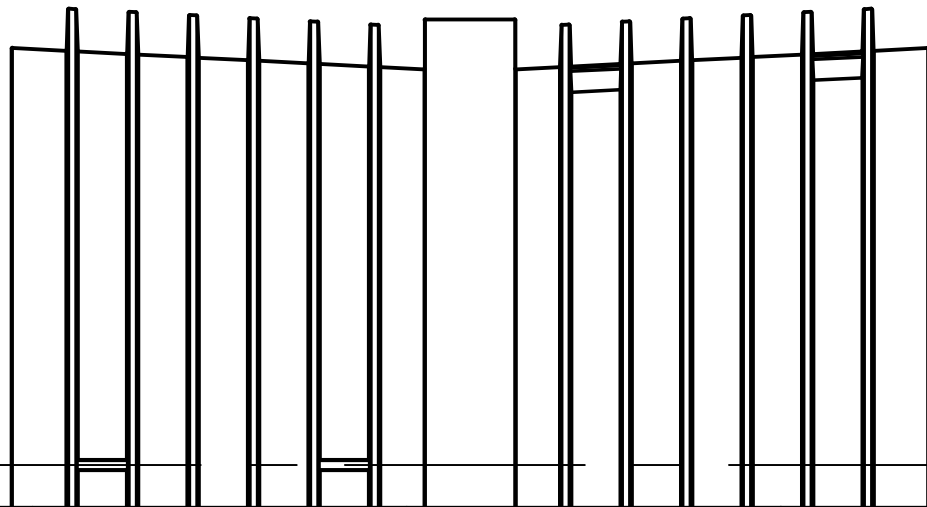
		Maße in Anlehnung an DIN EN 1401	Art.Nr.: 823910	MABSTAB:1
			Material: PVC	
			KG-System	
Gebr. Ostendorf Kunststoffe GmbH Rudolf-Diesel-Str. 6-8 D-49377 Vechta verkauf@ostendorf-kunststoffe.com www.ostendorf-kunststoffe.com			KGf Schachtfutter DN/OD 200/240	1
			Schutzvermerk nach DIN ISO 16016 beachten!	

Schnitt A-A



$\varnothing 24,15$
 $\varnothing 216,2^{+0,8}_{-0,6}$
 $\varnothing 200,6^{+0,5}_0$

242,5



		Maße in Anlehnung an DIN EN 1401	Art.Nr.: 823910	MABSTAB:1
			Material: PVC	
			KG-System	
Gebr. Ostendorf Kunststoffe GmbH Rudolf-Diesel-Str. 6-8 D-49377 Vechta verkauf@ostendorf-kunststoffe.com www.ostendorf-kunststoffe.com			KGf Schachtfutter DN/OD 200/240	1
			Schutzvermerk nach DIN ISO 16016 beachten!	