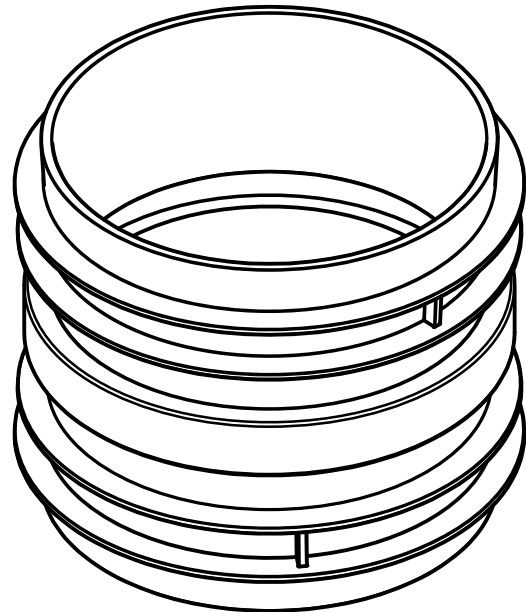
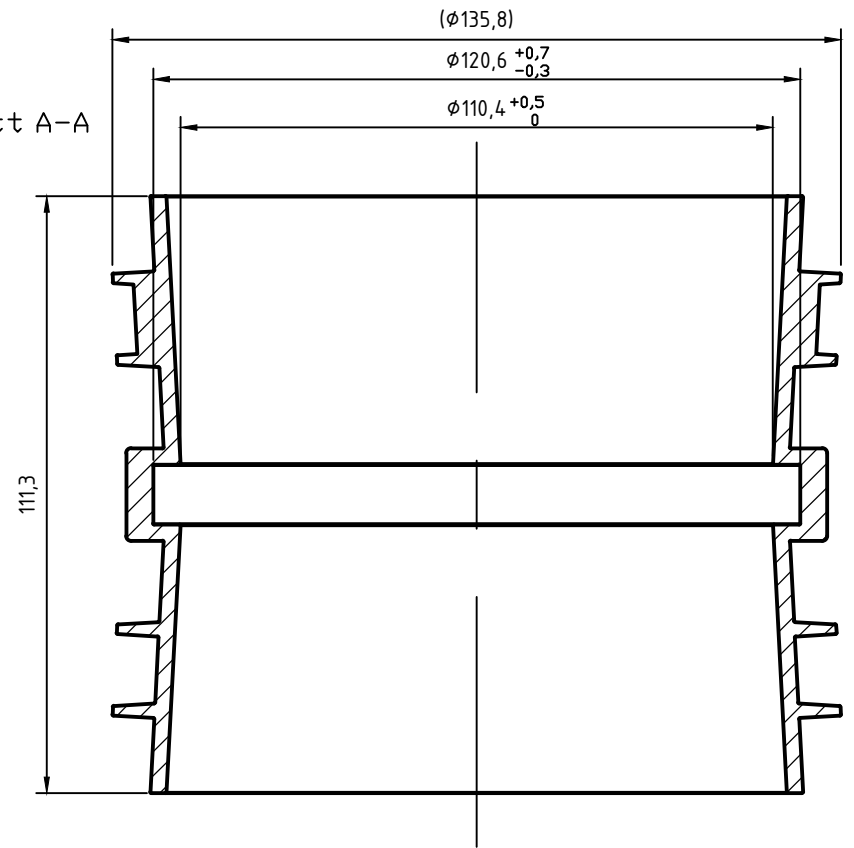



Schnitt A-A



		Maße in Anlehnung an DIN EN 1401	Art.Nr.: 820900 MABSTAB:1
Gebr. Ostendorf Kunststoffe GmbH Rudolf-Diesel-Str. 6-8 D-49377 Vechta verkauf@ostendorf-kunststoffe.com www.ostendorf-kunststoffe.com			Material: PVC
Datum: 09.10.2023 Name: C.KNIPPER		KG-System	
KGF Schachtfutter DN/OD 110/110			1 Blattgröße
<small>Schutzvermerk nach DIN ISO 16016 beachten!</small>			