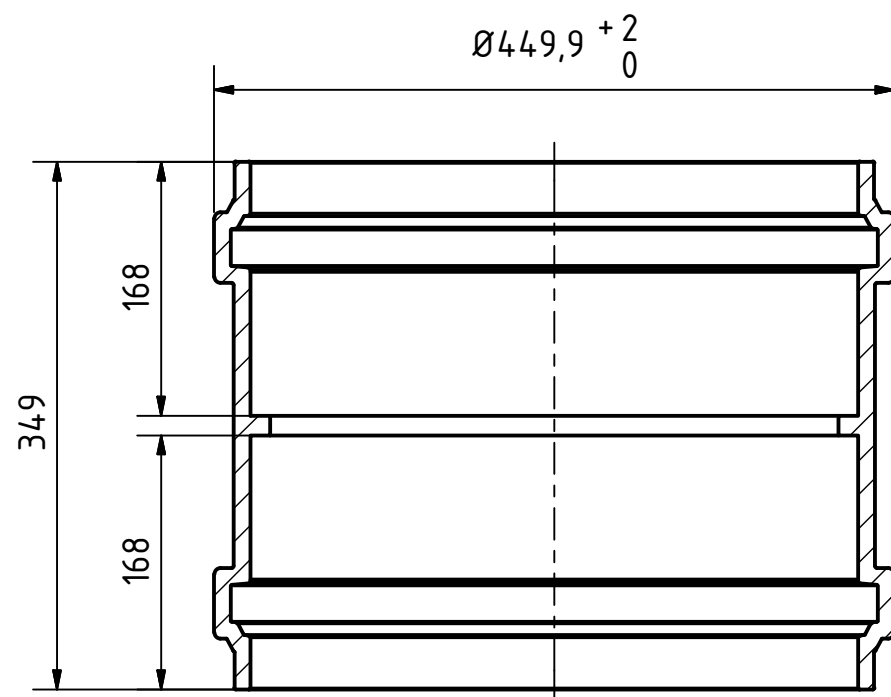



A-A ( 1 : 5 )



|  |            |                                     |            |                 |  |                  |    |
|--|------------|-------------------------------------|------------|-----------------|--|------------------|----|
|   |            | Maße nach<br>DIN EN<br>14 758-Teil1 |            | Art.Nr.: 777900 |  | Maßstab 1:5      |    |
|  |            |                                     |            | Material: PP-MD |  | <h1>KG 2000</h1> |    |
|  |            | Datum                               | Name       |                 |  |                  |    |
|  |            | Gezeichnet                          | 14.11.2016 | A.Schmedes      |  |                  |    |
|  |            | Kontroll.                           |            |                 |  |                  |    |
| Status   | Änderungen | Datum                               | Name       | Norm            |  |                  |    |
| Gebr. Ostendorf Kunststoffe GmbH<br>Rudolf-Diesel-Str. 6-8<br>D-49377 Vechta<br>verkauf@ostendorf-kunststoffe.com<br>www.ostendorf-kunststoffe.com |            |                                     |            |                 | KG2000MM Doppelmuffe DN/OD 400             |                  | 1  |
|  |            |                                     |            |                 | Schutzvermerk nach DIN ISO 16016 beachten! |                  | A3 |