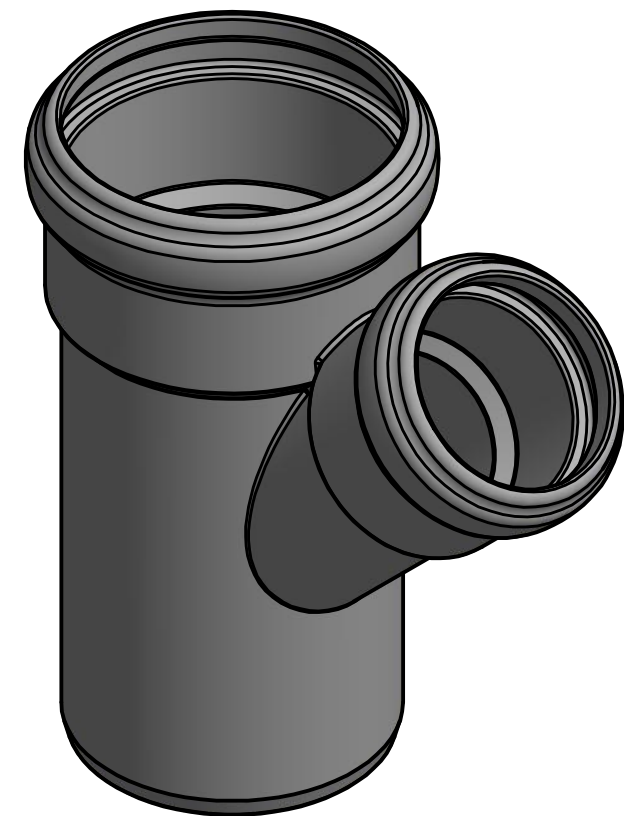
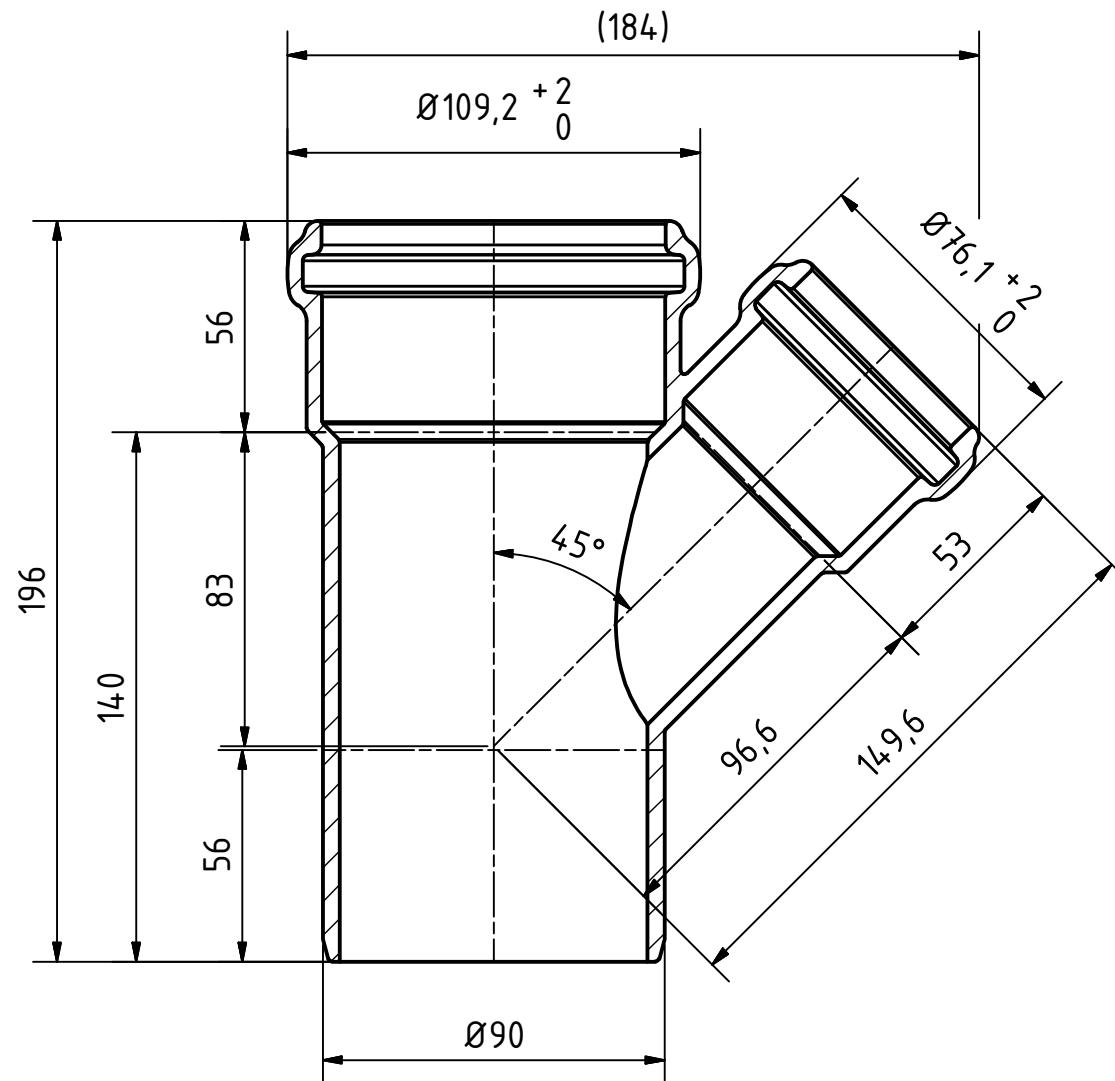



A-A (1 : 2)



| | | | | | | | |
|--|------------|-----------------------|------|-----------------|--|--------------------------------------|--|
|  | | Maße nach Z-42.1-217 | | Art.Nr.: 334220 | | Maßstab 1:2 | |
| | | | | Material: PP-MD | | | |
| | | Datum | | Name | | <h1>Skolan Safe</h1> | |
| | | Gezeichnet 08.01.2018 | | A.Schmedes | | | |
| | | Kontroll. | | | | | |
| Status | Änderungen | Datum | Name | Norm | | | |
| Gebr. Ostendorf Kunststoffe GmbH Rudolf-Diesel-Str. 6-8 D-49377 Vechta verkauf@ostendorf-kunststoffe.com www.ostendorf-kunststoffe.com | | | | | | SKOLANsafeEA Abzweig DN/OD 90/58/45° | |
| | | | | | | 1 A3 | |
| Schutzvermerk nach DIN ISO 16016 beachten! | | | | | | | |