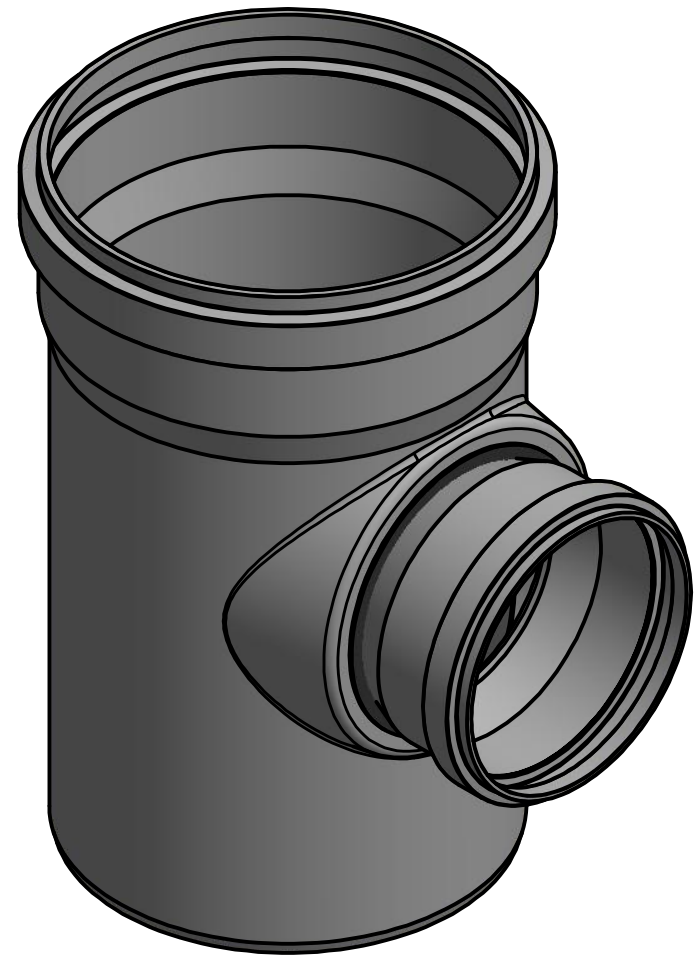
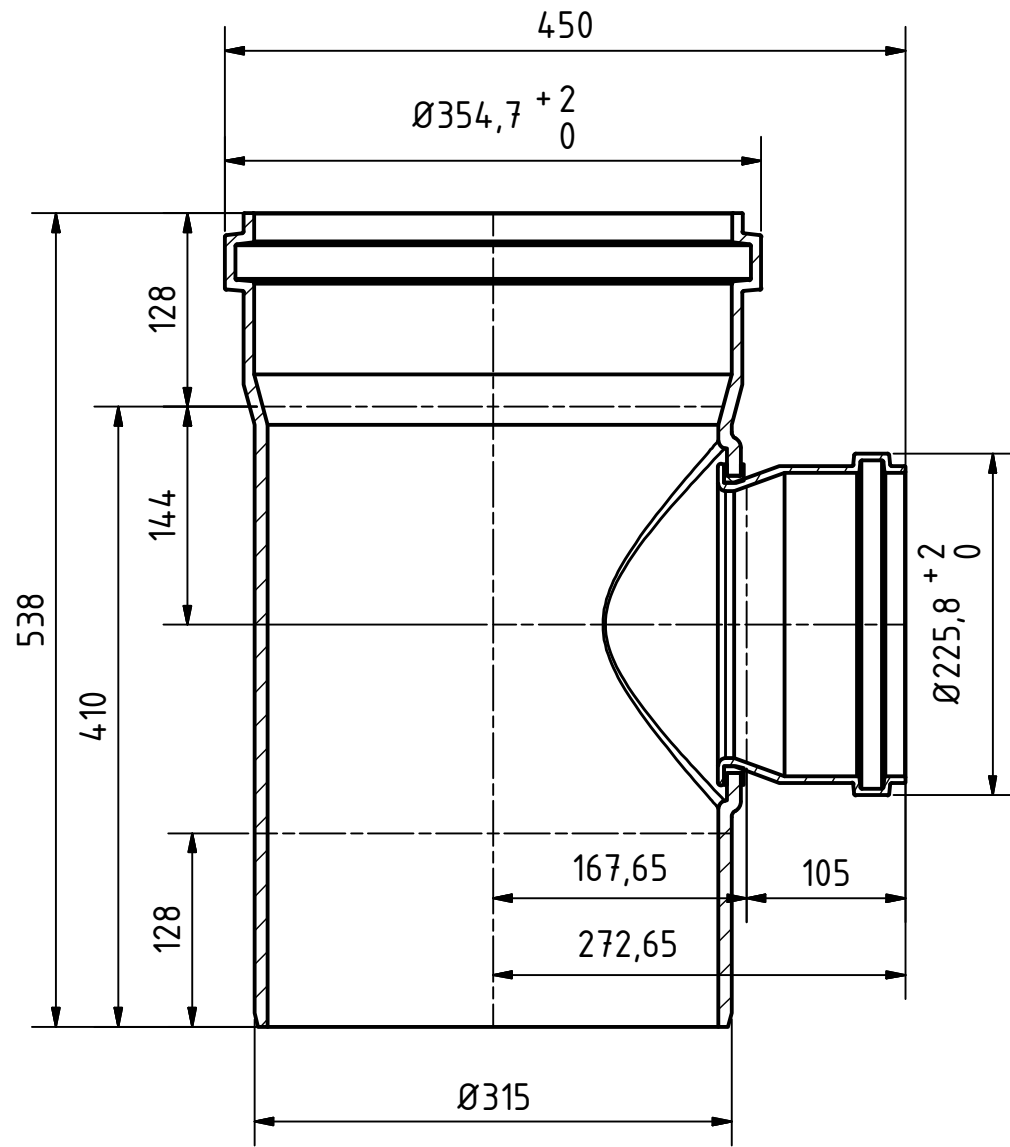


A-A (1 : 5)



| | | | | | | | |
|--|------------|------------------------|------|-----------------|--|--------------------------------|--|
| | | Maße nach DIN EN 1401 | | Art.Nr.: 225420 | | Maßstab 1:5 | |
| | | | | Material: PVC-U | | | |
| | | Datum | | Name | | <h1>KG-System</h1> | |
| | | Gezeichnet: 29.04.2017 | | A.Schmedes | | | |
| | | Kontrolliert: | | | | | |
| Status | Änderungen | Datum | Name | Norm | | | |
| Gebr. Ostendorf Kunststoffe GmbH Rudolf-Diesel-Str. 6-8 D-49377 Vechta verkauf@ostendorf-kunststoffe.com www.ostendorf-kunststoffe.com | | | | | | KGEA Abzweig DN/OD 315/200/87° | |
| | | | | | | | |
| <small>Schutzvermerk nach DIN ISO 16016 beachten!</small> | | | | | | | |