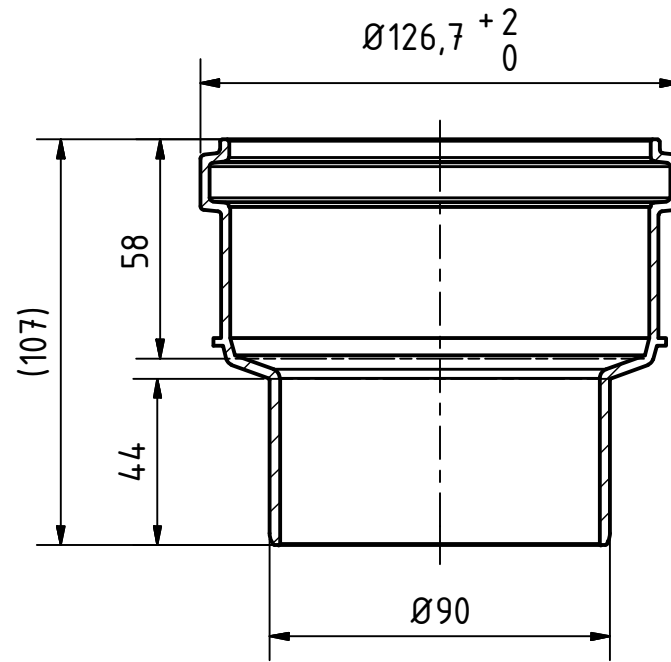



A-A (1 : 2)



| | | | | | | | |
|--|--|----------------------------|--|----------------------------------|--|-------------|--|
|  | | Maße nach DIN EN 1451-1 | | Art.Nr.: 175750 | | Maßstab 1:2 | |
| | | | | Material: PP-H schwerentflammbar | | | |
| | | | | Datum | | Name | |
| | | | | Gezeichnet 04.10.2016 | | A.Schmedes | |
| | | | | Kontroll. | | | |
| Status | | Änderungen | | Datum | | Name | |
| | | | | | | | |
| Gebr. Ostendorf Kunststoffe GmbH Rudolf-Diesel-Str. 6-8 D-49377 Vechta verkauf@ostendorf-kunststoffe.com www.ostendorf-kunststoffe.com | | | | <h1>HT Safe</h1> | | | |
| | | | | | | | |
| Schutzvermerk nach DIN ISO 16016 beachten! | | | | | | | |