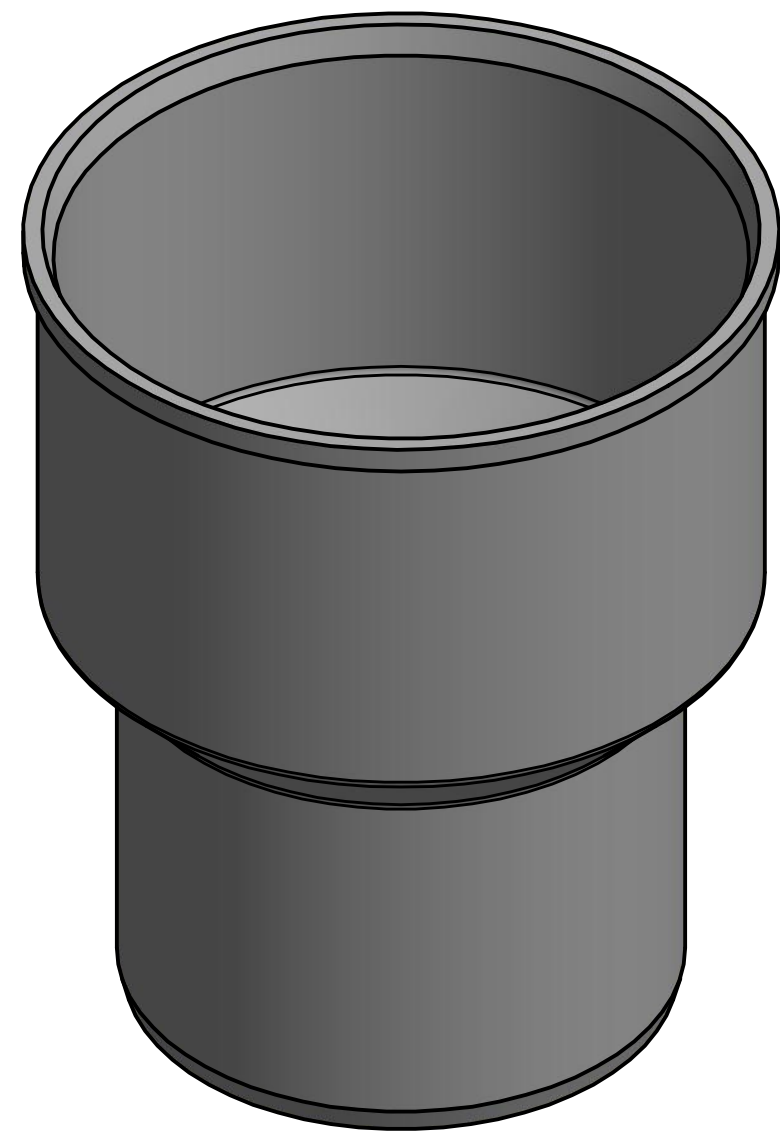
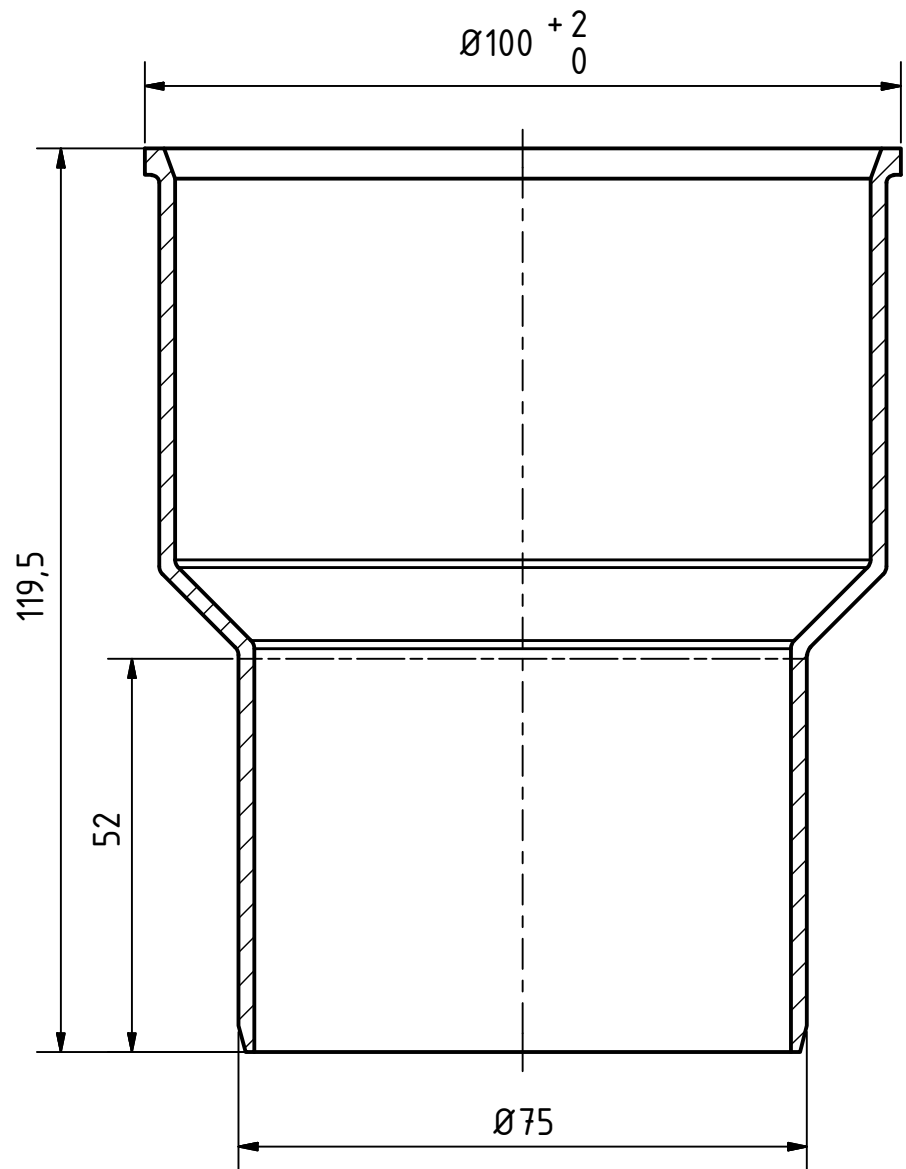
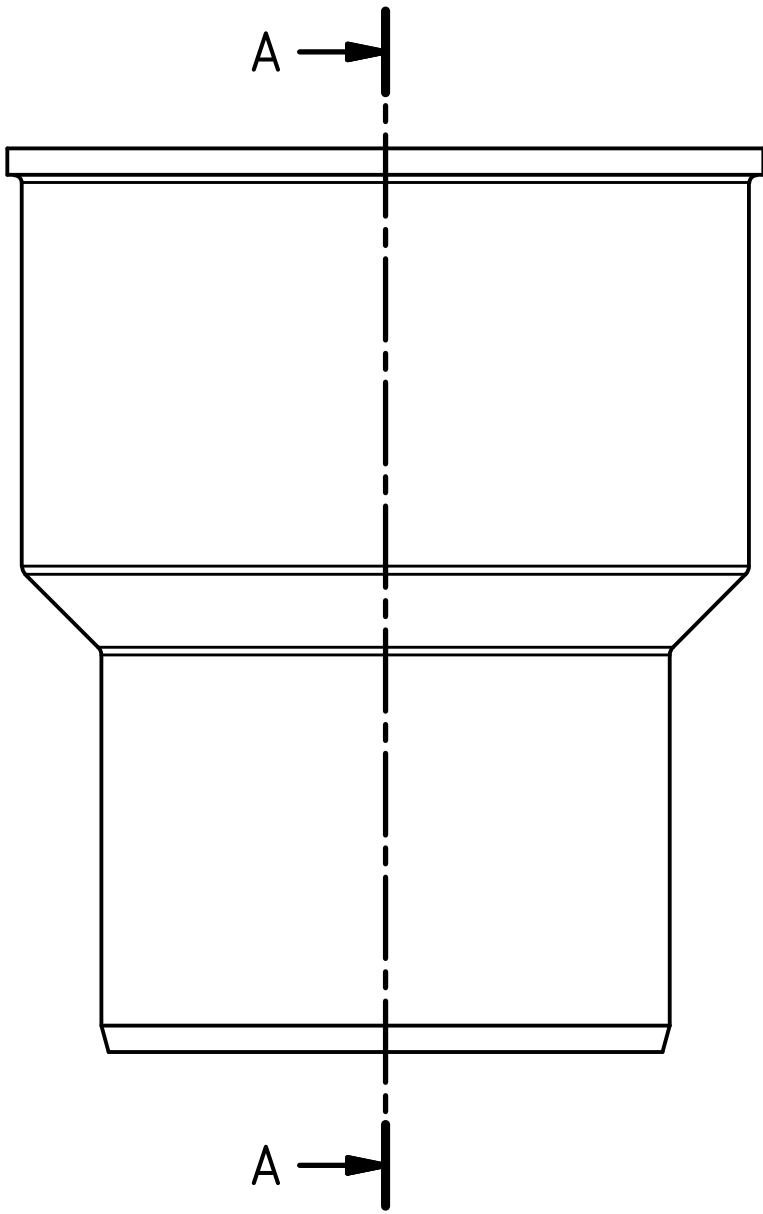


6 5 4 3 2 1


A-A (1 : 1)



D
C
B
A

D
C
B
A

6 5 4 3 2 1

		Maße nach DIN EN 1451-1		Art.Nr.: 173820		Maßstab 1:1		
				Material: PP-H schwerentflammbar				
			Datum	Name		<h1>HT Safe</h1>		
			Gezeichnet	04.10.2016	A.Schmedes			
			Kontroll.					
Status	Änderungen	Datum	Name	Norm				
Gebr. Ostendorf Kunststoffe GmbH Rudolf-Diesel-Str. 6-8 D-49377 Vechta verkauf@ostendorf-kunststoffe.com www.ostendorf-kunststoffe.com						HTsafeUG Anschluss an Gussrohr DN/OD 75		
						<div style="border: 1px solid black; padding: 5px; display: inline-block;"> 1 A3 </div>		
Schutzvermerk nach DIN ISO 16016 beachten!								